



**JERRY D.
PARRISH, PH.D.**

**Chief Economist
Florida Chamber Foundation**

**jparrish@flfoundation.org
[@DrJerryParrish](https://www.instagram.com/DrJerryParrish)**

www.theFloridaScorecard.org

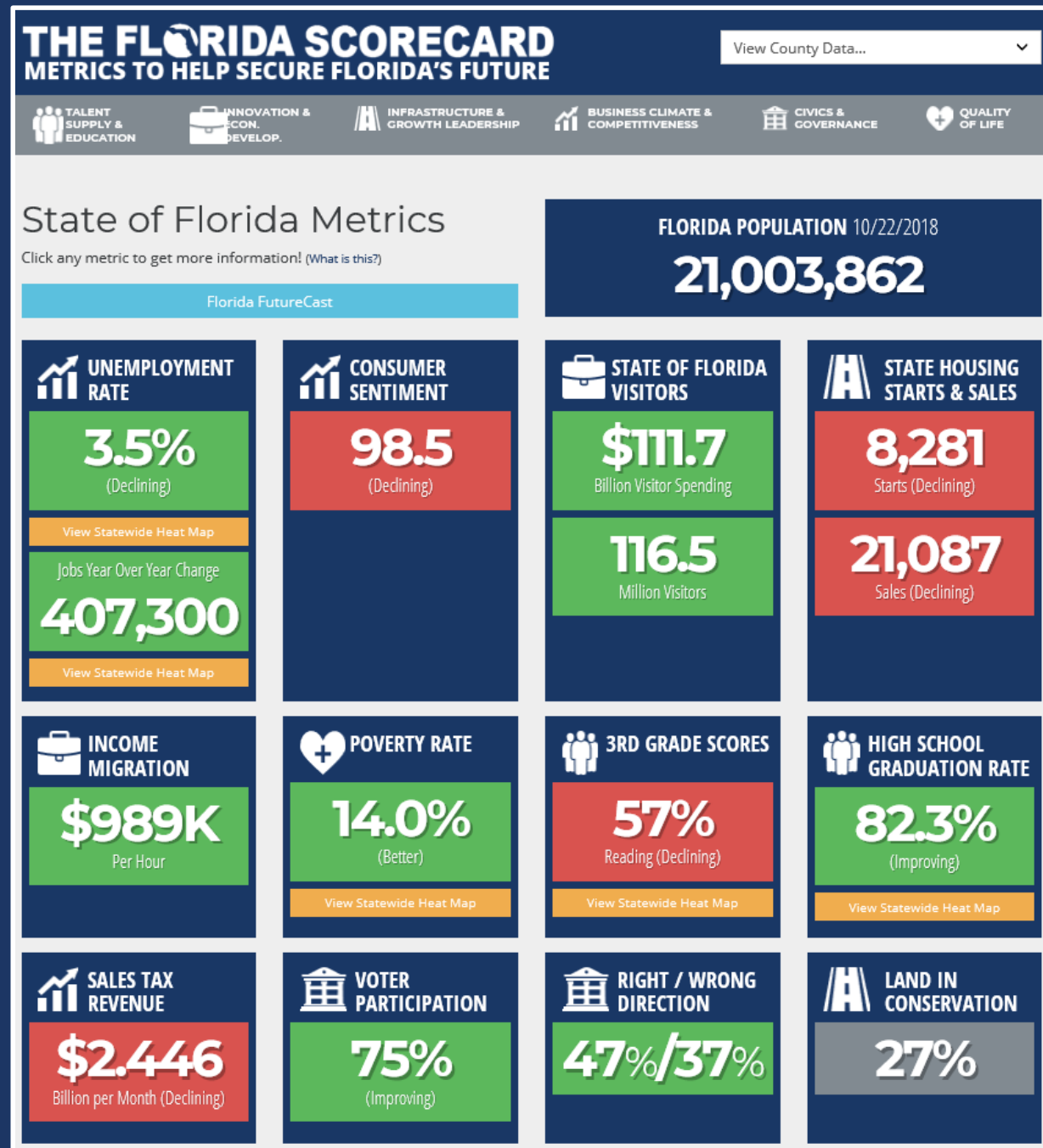
Downloadable charts

Data is downloadable

Links to data sources

No branding

Contact information





TALENT
SUPPLY &
EDUCATION



INNOVATION &
ECON.
DEVELOP.



INFRASTRUCTURE &
GROWTH LEADERSHIP



BUSINESS CLIMATE &
COMPETITIVENESS



CIVICS &
GOVERNANCE



QUALITY
OF LIFE

State of Florida Metrics (What is this?)

Florida FutureCast

Talent Supply & Education

Click any metric to get more information!

3RD GRADE SCORES

57%

Reading (Declining)

[View Statewide Heat Map](#)

62%

Math (Unchanged)

8TH GRADE SCORES

55%

Reading (Declining)

46%

Math (Declining)

48%

Science (Unchanged)

NATIONAL 4TH GRADE RANKINGS

7th

Math (Improving)

5th

Reading (Improving)

NATIONAL 8TH GRADE RANKINGS

34th

Math (Improving)

25th

Reading (Improving)

HIGH SCHOOL GRADUATION RATE

82.3%

(Improving)

COLLEGE AFFORDABILITY

2nd

4 Year (Unchanged)

11th

2 Year (Unchanged)

EDUCATIONAL ATTAINMENT

48.3%

Current

55%

2025 Goal

EDUCATIONAL ATTAINMENT

37.4%

AA (Improving)

27.8%

Bachelor (Improving)

[View Statewide Heat Map](#)

THE FLORIDA SCORECARD

METRICS TO HELP SECURE FLORIDA'S FUTURE

View County Data...



TALENT
SUPPLY &
EDUCATION



INNOVATION &
ECON.
DEVELOP.



INFRASTRUCTURE &
GROWTH LEADERSHIP



BUSINESS CLIMATE &
COMPETITIVENESS



CIVICS &
GOVERNANCE



QUALITY
OF LIFE

Duval County Metrics (What is this?)

Florida FutureCast

Click any metric to get more information!

 UNEMPLOYMENT
RATE

2.9%

(Declining)

With Disability (2014) **15.1%**

Jobs Year Over Year Change

9,685

[View Statewide Heat Map](#)

 HOUSING
PERMITS

2,908

Permits (Improving)

 SALES TAX
REVENUE

\$150.40

Million per Year (Improving)

 WEALTH
MIGRATION

\$38.08

Million per Year

 POVERTY RATE

15.1%

(Worse)

[View Statewide Heat Map](#)

 HIGH SCHOOL
GRADUATION RATE

80.8%

(Improving)

[View Statewide Heat Map](#)

 LAND IN
CONSERVATION

20%

 POPULATION

936.81

Thousand

[View Statewide Heat Map](#)



2007



2007



2014

BREAKING:

Florida's Economy Hits New \$1 Trillion GDP Milestone



Florida gets 77% of its General Revenue from Sales and Use Taxes

Fiscal Year 2017-18: \$30.9 billion

General Revenue Sources:

Sales and Use Taxes	\$23.85 billion
Corporate Income Tax	\$2.18 billion
Other Taxes and Fees	\$1.65 billion
Documentary Stamp Tax	\$871.8 million
Insurance Taxes	\$730.7 million
Highway Safety Fees	\$525.7 million
Service Charges	\$470.5 million
Corporation Filing Fees	\$351.7 million
Beverage Tax & Licenses	\$293.8 million

Data Source: 2018 Florida Tax Handbook, Florida Revenue Estimating Conference

Government Employee Ratios	North Carolina	South Carolina	Florida
People Per State Government Employee	49.0	47.0	81.6
People Per Local Government Employee	22.7	22.2	29.4
People per State plus Local Government Employee	15.5	15.1	21.6

THE FLORIDA SCORECARD

METRICS TO HELP SECURE FLORIDA'S FUTURE

View County Data...

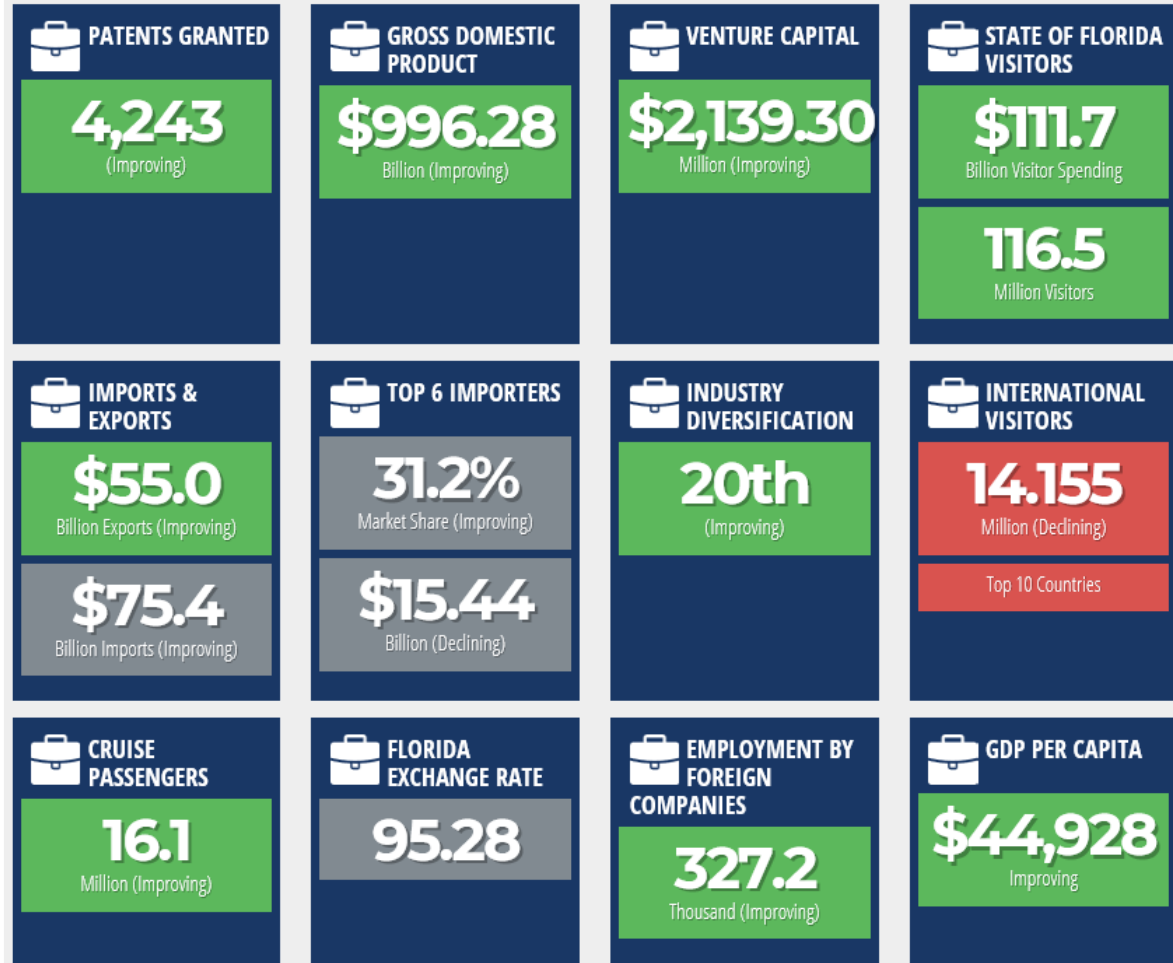


State of Florida Metrics (What is this?)

Innovation & Economic Development

Florida FutureCast

Click any metric to get more information!

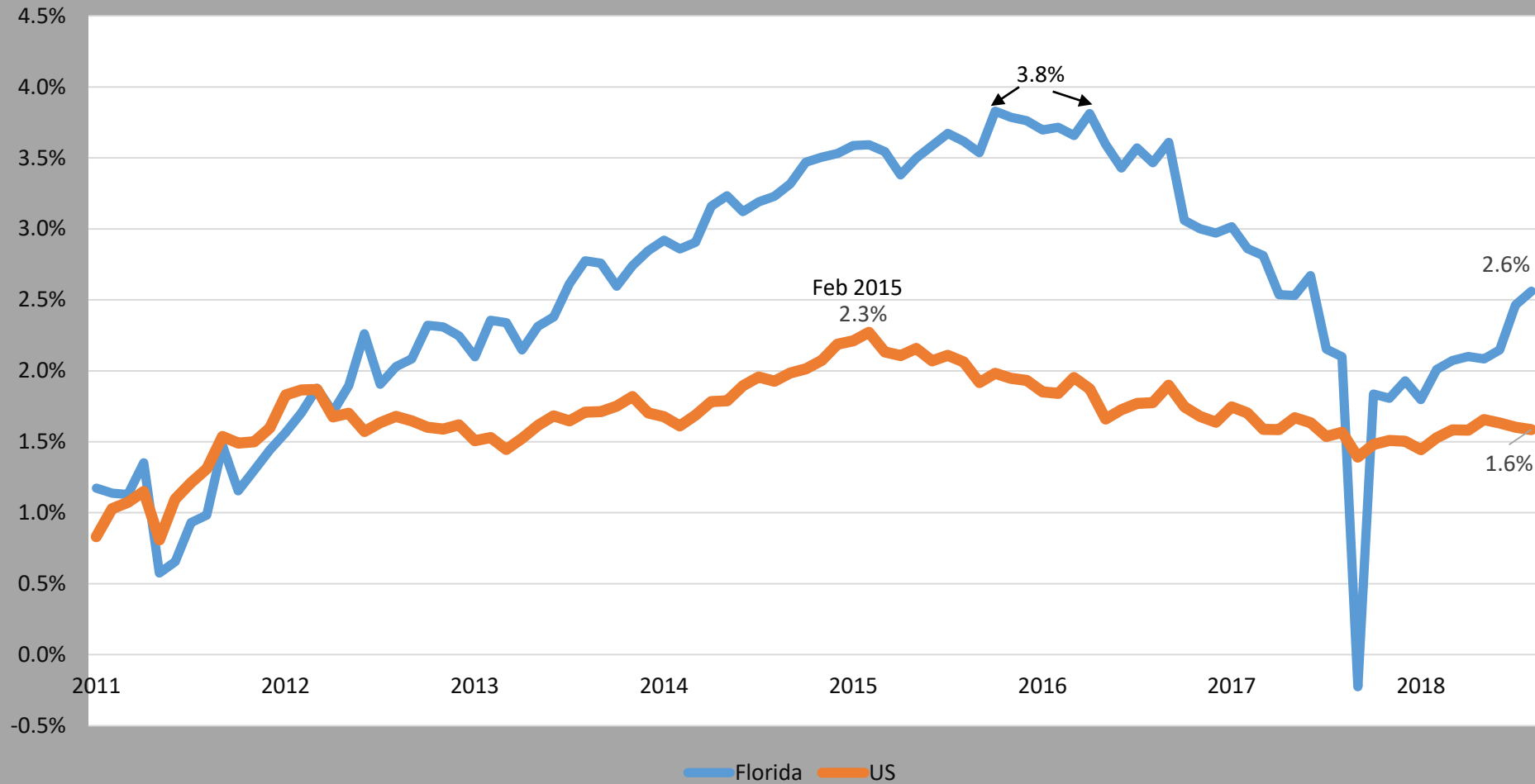


Q1 2018
 South Carolina #2
 North Carolina #4

Source: Florida Gulf Coast University Regional Economic Research Institute

Private Jobs	Florida	North Carolina	South Carolina	U.S.
Service Producing	87.1%	80.4%	78.9%	82.7%
Goods Producing	12.9%	19.6%	21.1%	17.3%
Industries				
Natural Resources and Mining	1.1%	0.8%	0.7%	1.4%
Construction	7.0%	5.8%	6.0%	5.6%
Manufacturing	4.8%	12.9%	14.4%	10.2%
Trade, Transportation, and Utilities	23.3%	22.5%	23.3%	22.1%
Information	1.8%	2.2%	1.6%	2.3%
Financial Services	7.4%	6.3%	5.8%	6.6%
Professional and Business Services	17.7%	17.0%	16.9%	16.7%
Education and Health Services	16.9%	16.2%	13.5%	18.4%
Leisure and Hospitality	16.2%	13.2%	14.7%	12.7%
Other Services	3.7%	3.0%	3.1%	3.6%

Job Growth - U.S. versus Florida



Job Creation

August 2017 to September 2018 – 13 Months

Not using September 2017 because of effects of Hurricane Irma
(showed the temporary loss of 166,900 jobs)

Florida Job Creation Rate: 2.7% (13 months)

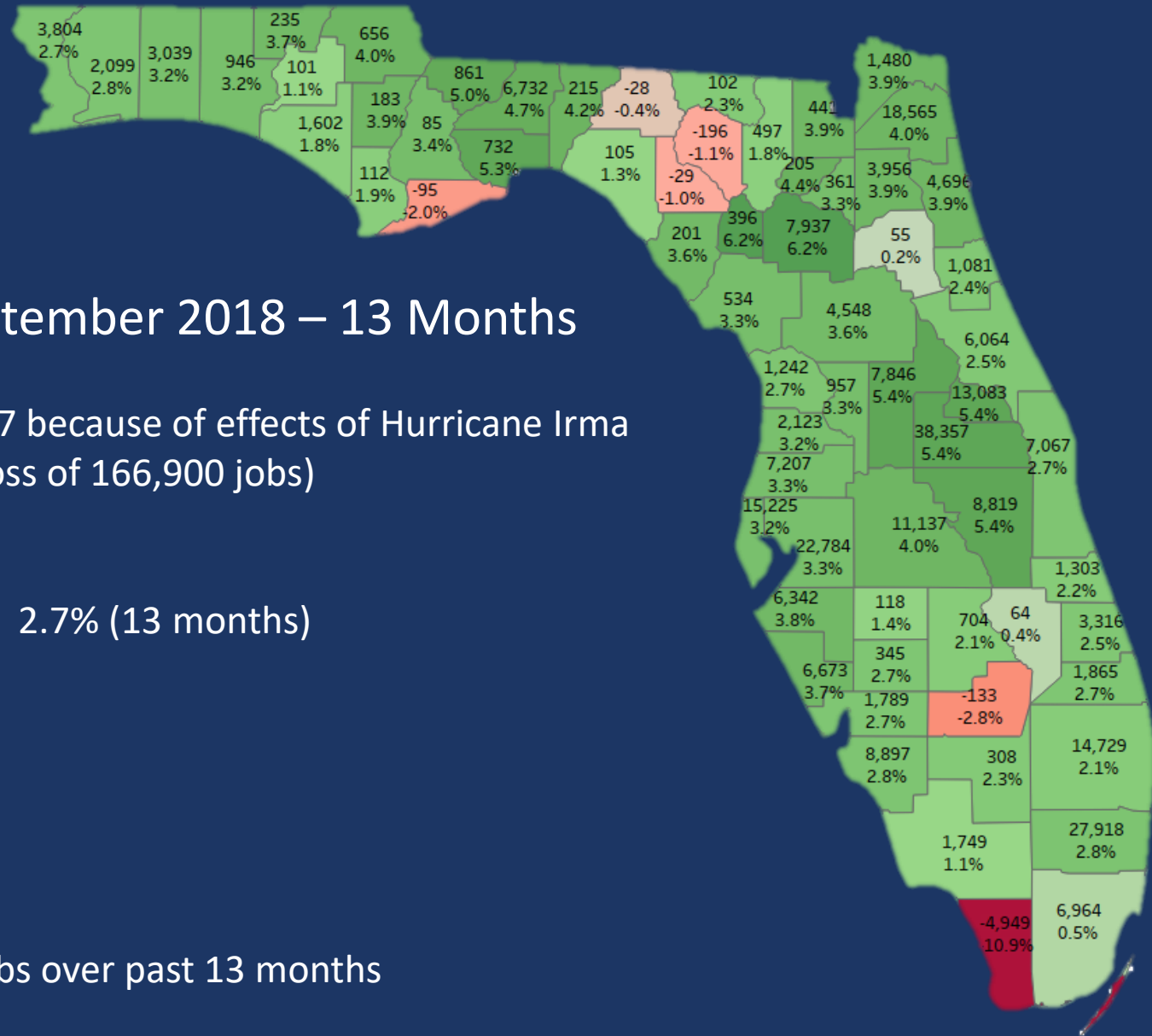
Top Counties for Jobs:

Orange – 38,357

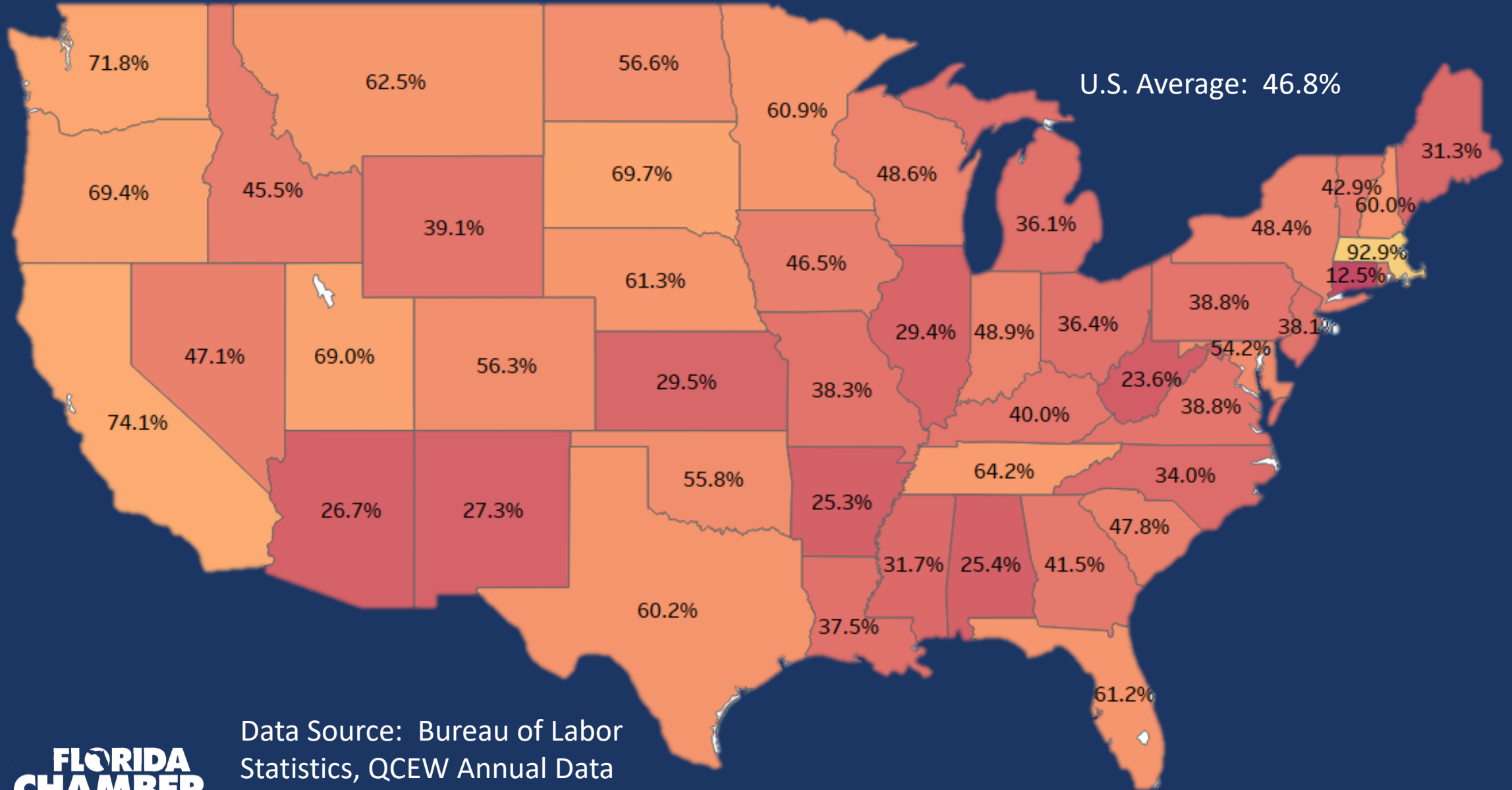
Broward 27,918

Hillsborough 22,784

6 Florida Counties Lost Jobs over past 13 months



Percent of Counties, by state, who had more jobs in 2017 than they did in 2007



Data Source: Bureau of Labor Statistics, QCEW Annual Data

Job Growth 2007 to 2017

U.S. Job Growth Rate: 6.3%

Florida's Job Growth Rate: 6.9%

26 Florida Counties Lost Jobs
between 2007 and 2017 – 38.8%

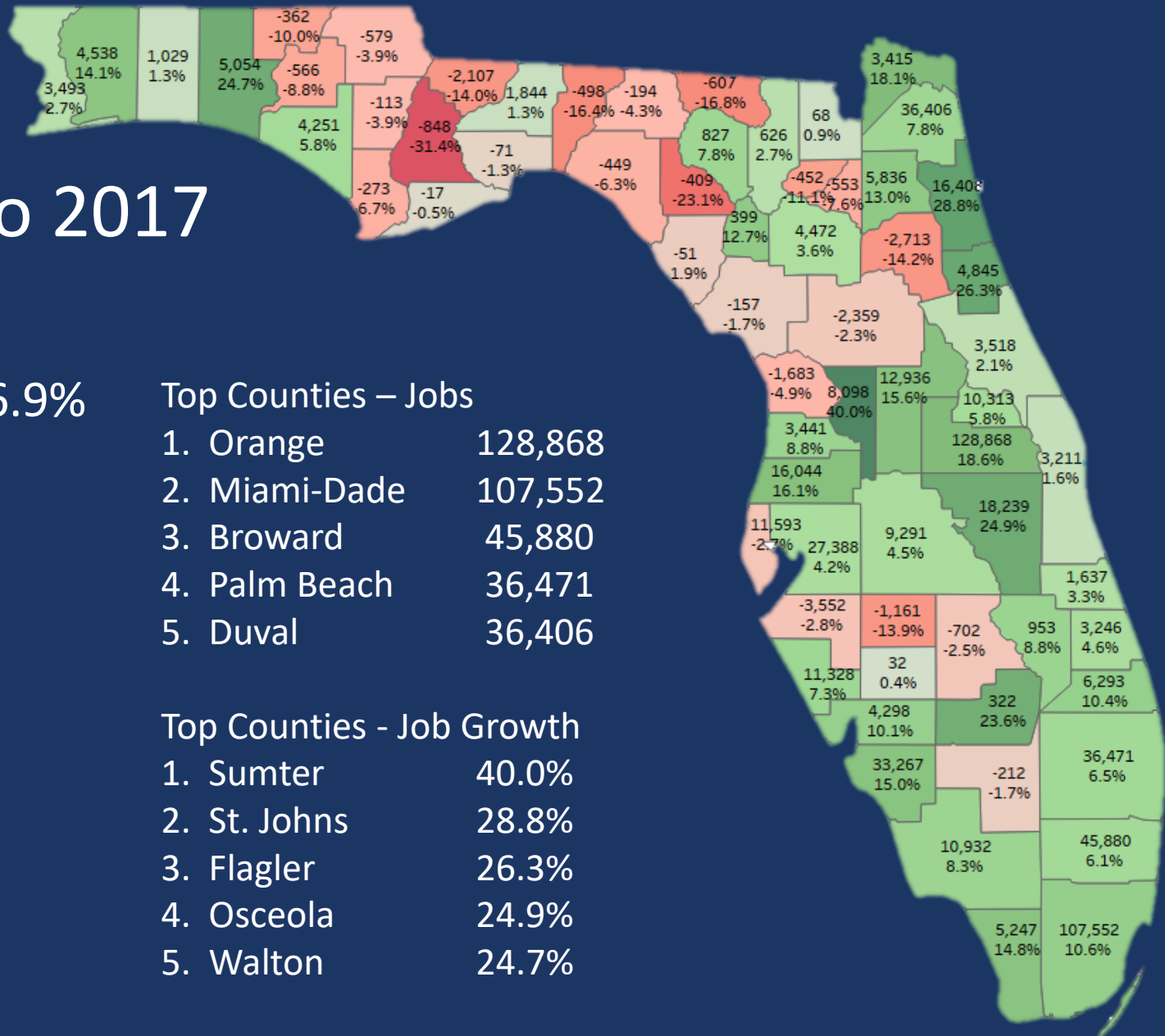
53.2% of U.S. Counties Lost Jobs
between 2007 and 2017

Top Counties – Jobs

1. Orange	128,868
2. Miami-Dade	107,552
3. Broward	45,880
4. Palm Beach	36,471
5. Duval	36,406

Top Counties - Job Growth

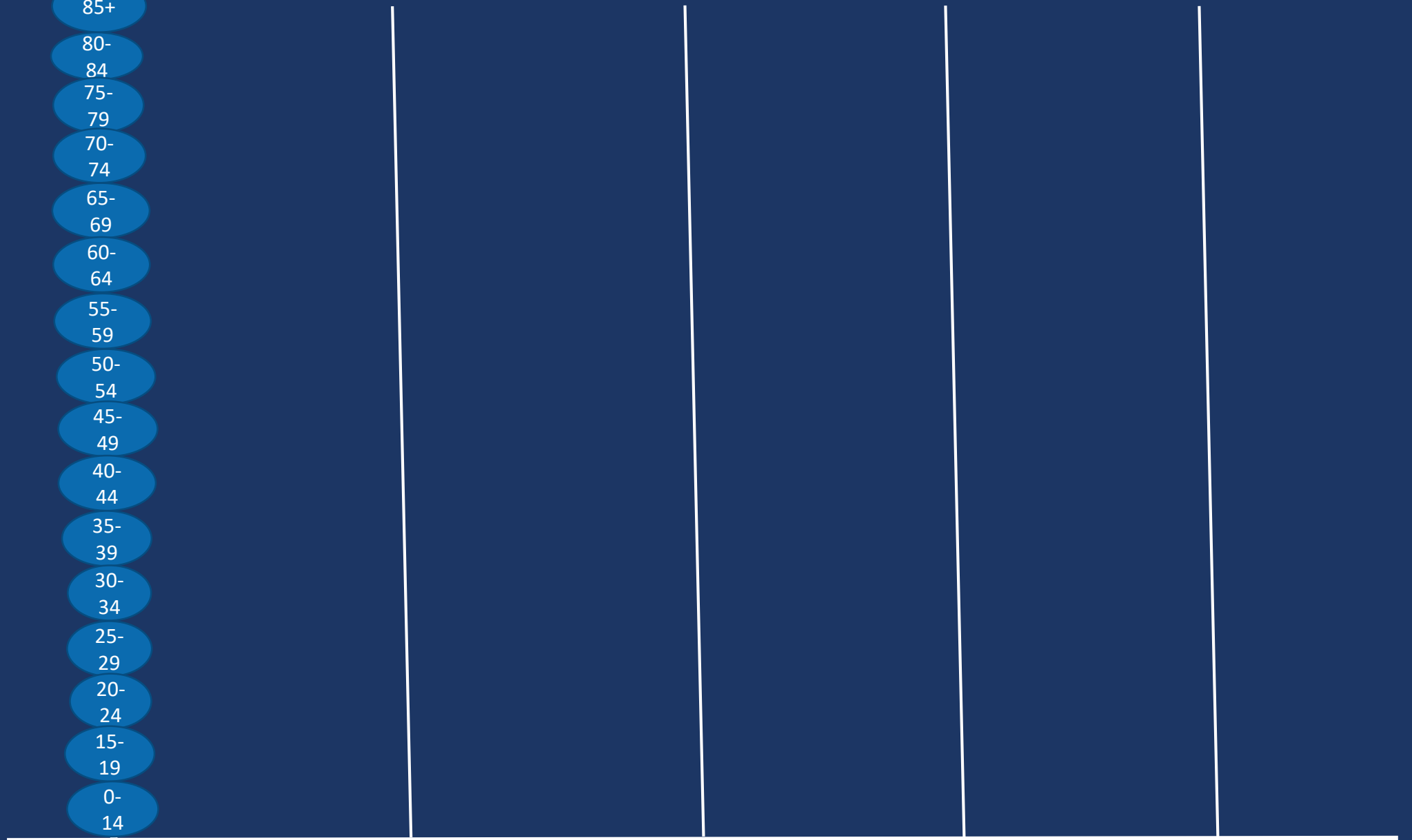
1. Sumter	40.0%
2. St. Johns	28.8%
3. Flagler	26.3%
4. Osceola	24.9%
5. Walton	24.7%



Growth to 2030 by Age Group

Age Group

- 85+
- 80-84
- 75-79
- 70-74
- 65-69
- 60-64
- 55-59
- 50-54
- 45-49
- 40-44
- 35-39
- 30-34
- 25-29
- 20-24
- 15-19
- 0-14



0%

20%

40%

60%

80%



FLORIDA JOBS 2030

A Cornerstone
Series Report For
the Florida 2030
Initiative

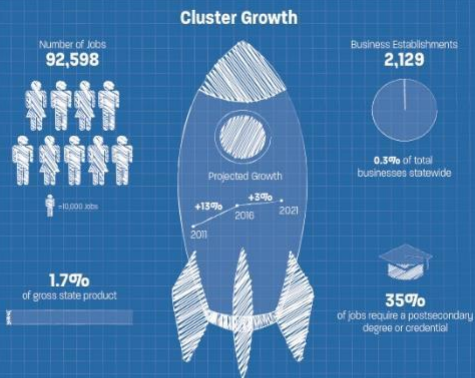


**FLORIDA
CHAMBER**
Foundation

SECURING FLORIDA'S FUTURE
ffoundation.org

**FLORIDA
CHAMBER**
Foundation

Aerospace & Aviation

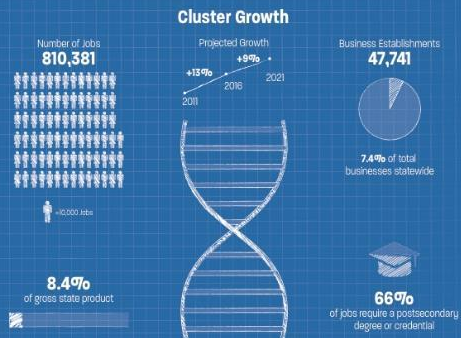


Largest Sub-Clusters

with projected growth through 2021



Health Care and Life Sciences

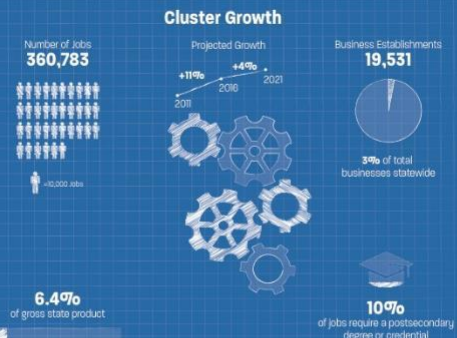


Largest Sub-Clusters

with projected growth through 2021



Manufacturing

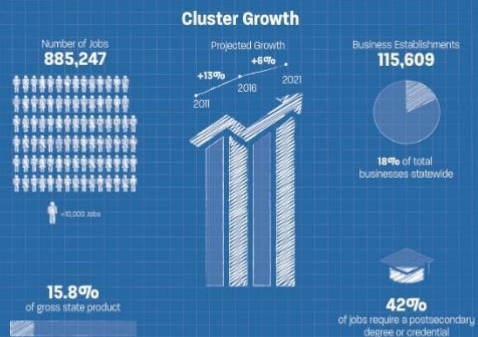


Largest Sub-Clusters

with projected growth through 2021



Finance and Professional Services

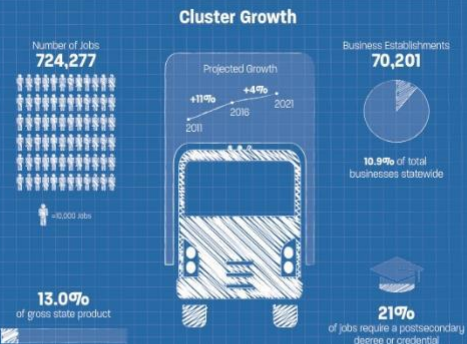


Largest Sub-Clusters

with projected growth through 2021



Logistics and Distribution



Largest Sub-Clusters

with projected growth through 2021

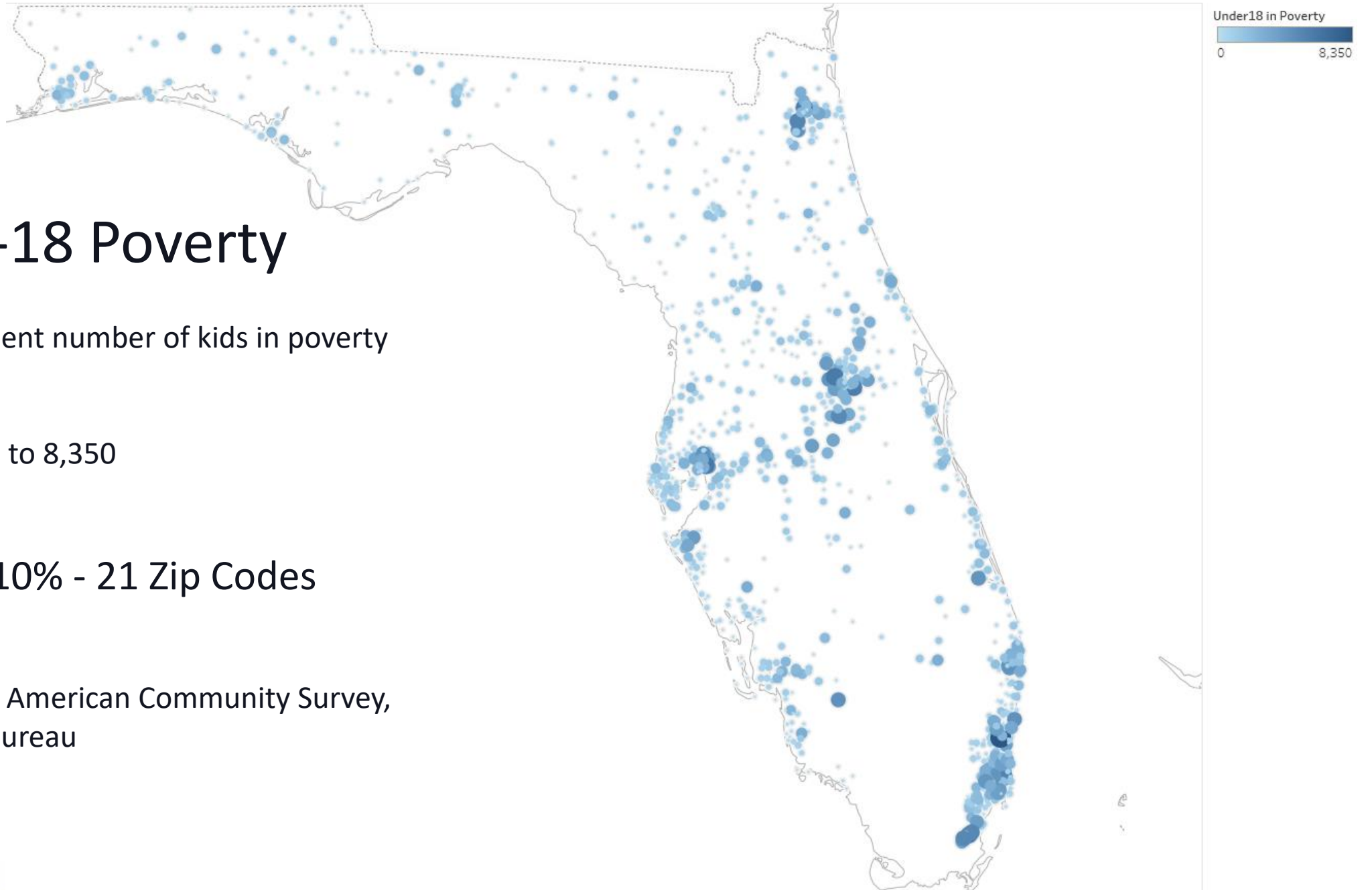




Florida Chamber Foundation

LESS POVERTY, MORE PROSPERITY: The Florida Fiscal Cliffs Report





Under-18 Poverty

Circles represent number of kids in poverty by zip code

Range from 0 to 8,350

Poverty: 10% - 21 Zip Codes

Source Data: American Community Survey, U.S. Census Bureau

Kids in Poverty in Florida

Top Number: Number of kids in Poverty by County

Bottom: Under-18 Poverty Rate

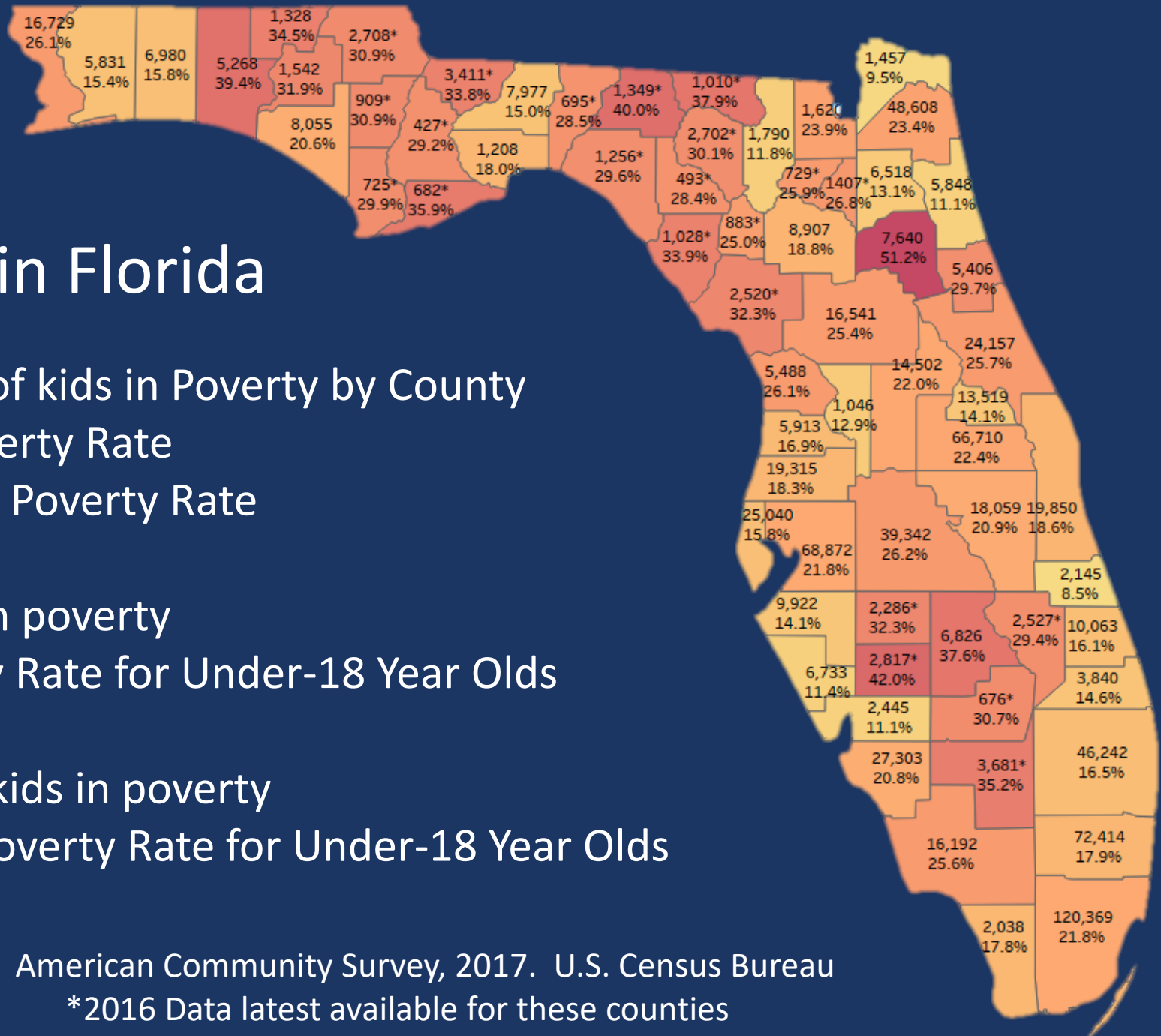
Heat Map on Under-18 Poverty Rate

Florida: 840,179 kids in poverty

20.3% Poverty Rate for Under-18 Year Olds

Duval County: 48,608 kids in poverty

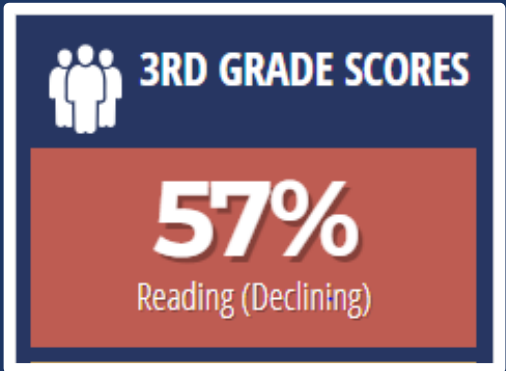
23.4% Poverty Rate for Under-18 Year Olds



Data: American Community Survey, 2017. U.S. Census Bureau

*2016 Data latest available for these counties

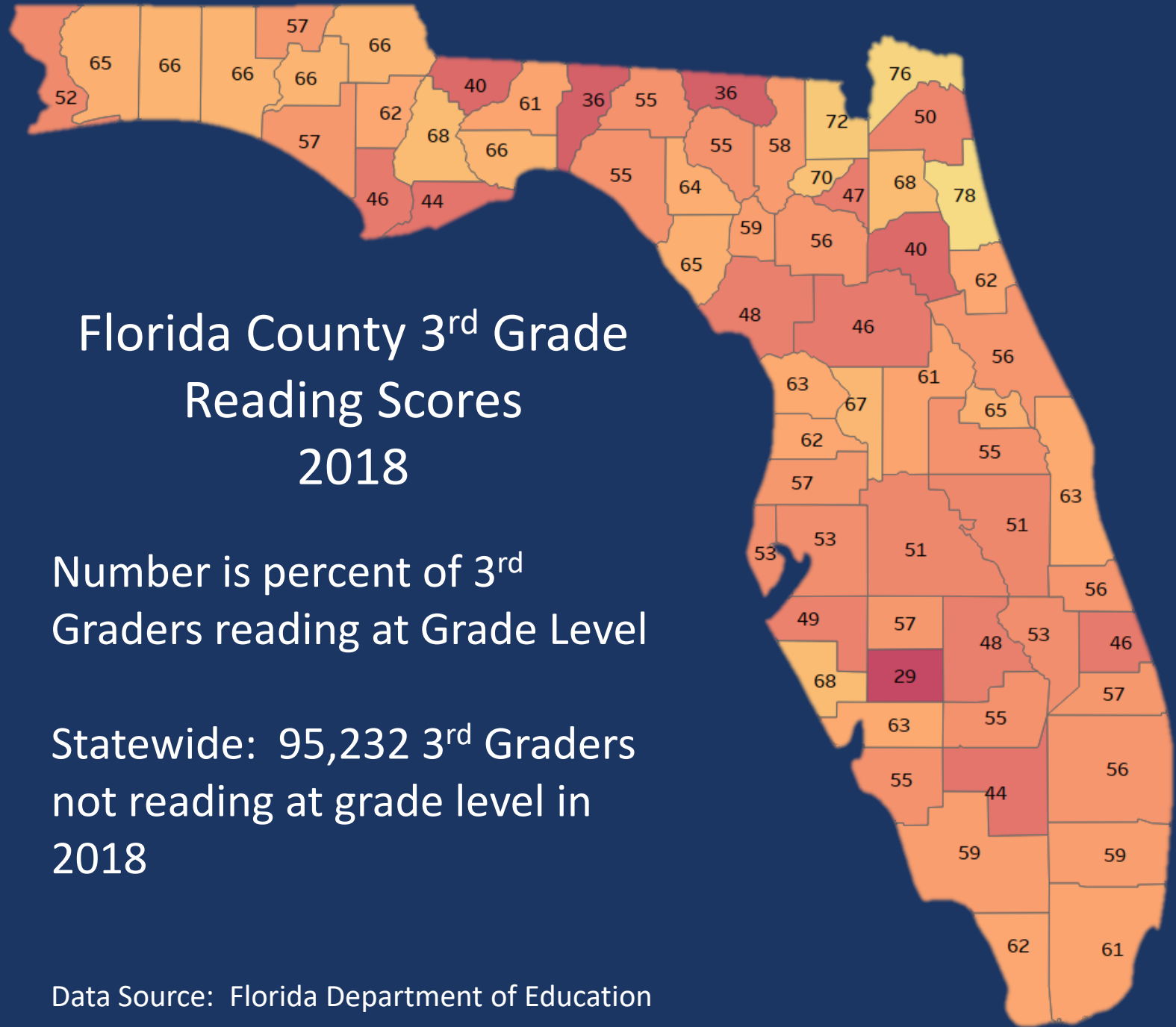
Florida

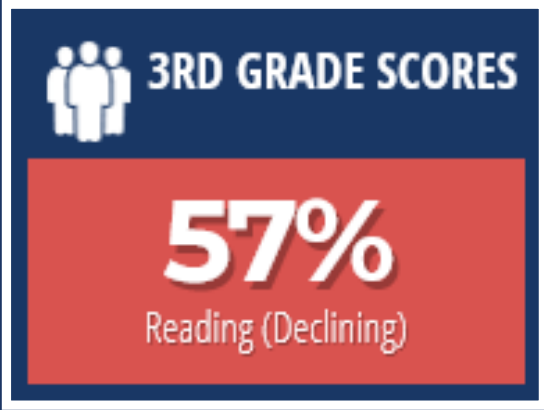


Florida County 3rd Grade Reading Scores 2018

Number is percent of 3rd Graders reading at Grade Level

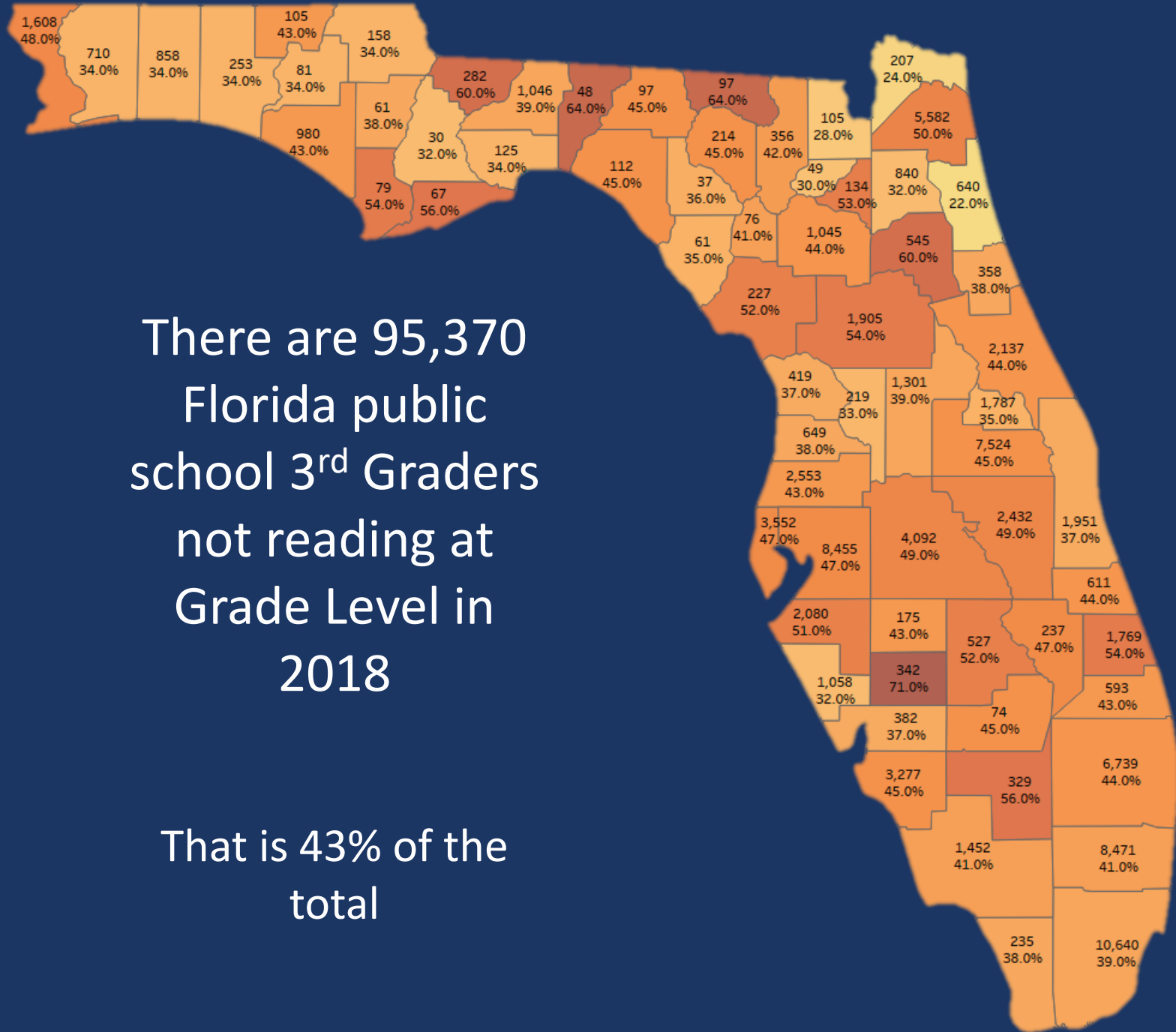
Statewide: 95,232 3rd Graders not reading at grade level in 2018





Top Number: Number of 3rd graders not reading at 3rd grade level

Bottom Number: Percent not reading at 3rd grade level



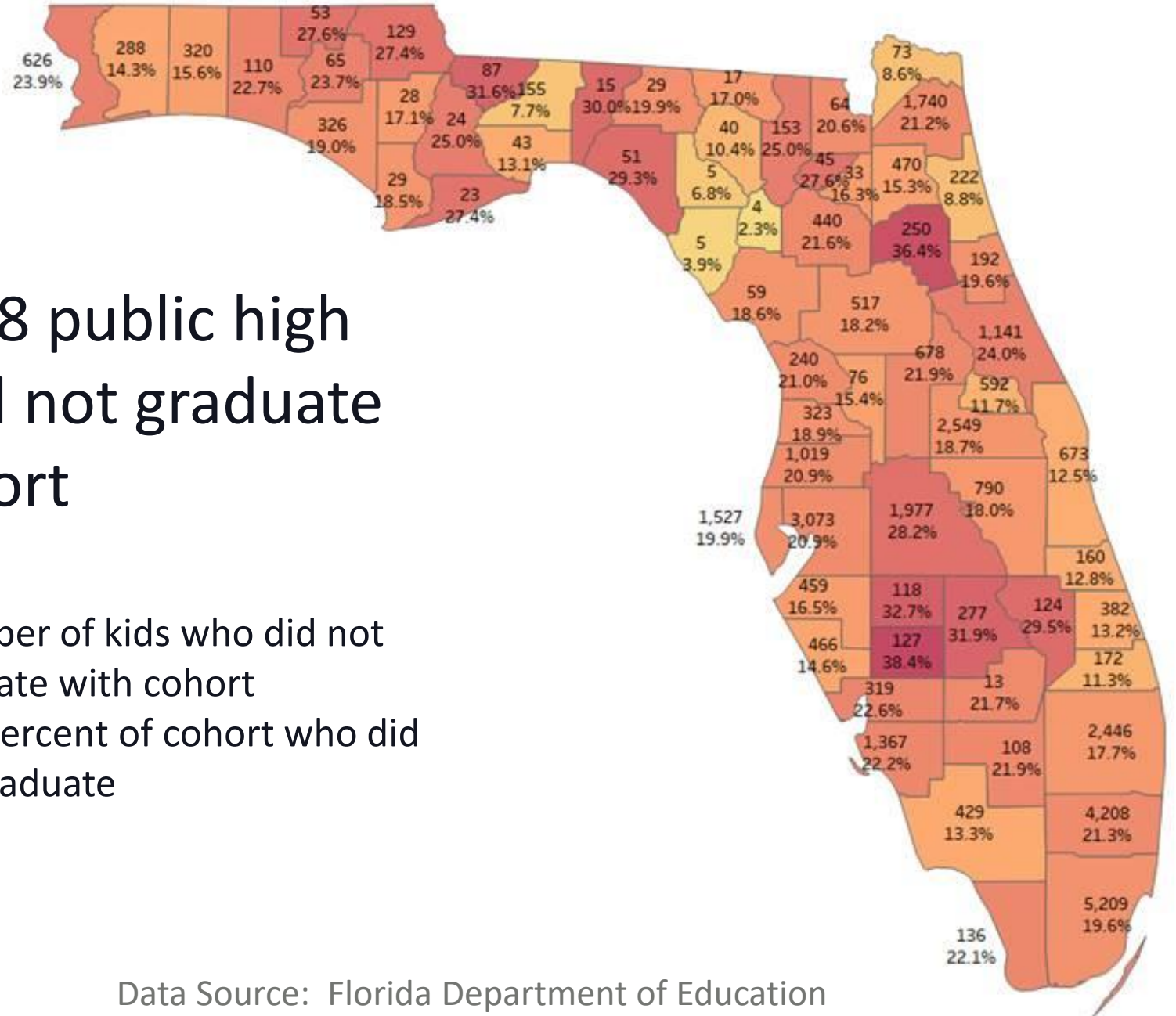
There are 95,370 Florida public school 3rd Graders not reading at Grade Level in 2018

That is 43% of the total

In 2017, 37,908 public high school kids did not graduate with their cohort

Top number: Number of kids who did not graduate with cohort

Bottom number: Percent of cohort who did not graduate





1 PLAN
3 GOALS
6 PILLARS
for Florida 2030



1 STEERING COMMITTEE
6 ADVISORY COMMITTEES
155+ PARTNERS & LEADERS
weighing in on Florida's future



10,000+ FLORIDIANS
engaged through
83 TOWN HALLS
covering all
67 COUNTIES

FLORIDA 2030

FLORIDA CHAMBER FOUNDATION

SPECIAL THANKS TO OUR FLORIDA 2030 PARTNERS

PILLAR LEADERSHIP PARTNERS



EDYTH BUSH
CHARITABLE FOUNDATION



SUSTAINING PILLAR PARTNERS



ANNUAL PILLAR PARTNERS



www.Florida2030.org



HOW WILL FLORIDA WORK IN 2030?



Global Markets



Innovation



Future of Work

Resources



Risk and Resiliency



HOW WILL FLORIDA LIVE IN 2030?



Growth



Diversity



Urbanization



Ecosystem Essentials



**JERRY D.
PARRISH, PH.D.**

**Chief Economist
Florida Chamber Foundation**

**jparrish@flfoundation.org
@DrJerryParrish**