

## Data Informed Decisions

Using the Florida Chamber Foundation's groundbreaking Florida Scorecard, associated Heat Maps, the Florida Gap Map, and our expert research and analysis, we not only have the ability to identify the unique issues plaguing each neighborhood, we can also curate the unique solutions needed to address each root cause blocking a path toward prosperity with the help of the business community.

## Ten Root Causes of Poverty



## Early Learning Matters!

Third grade reading is an essential measure as one stops learning to read, and starts reading to learn. Studies have shown that 88 percent of those who fail to complete high school were behind in third grade. Not completing high school drastically impacts one's future as long-range studies have found high school dropouts cost society \$260,000 over a lifetime.

# Florida Chamber Foundation's Path to Prosperity: Citrus County

### BY THE NUMBERS



- # of zip codes: 13 of 983
- # of children in poverty: 5,290 of 714,768
- **Half of all children in poverty within this county live in just 5 zip codes**



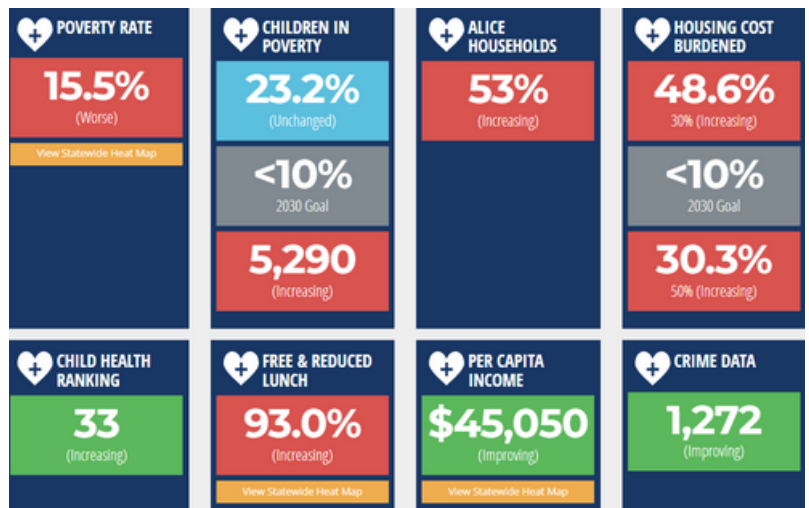
- Percentage of Citrus third-graders reading at or above grade level: 46%
- # of children not reading at third-grade level: 660



- Number of households at or below the ALICE threshold identified by the United Way: 36,182



- Percentage students receiving free or reduced lunch: 93.0%



These Florida 2030 metrics and more found on [TheFloridaScorecard.org](http://TheFloridaScorecard.org)

### THE CASE FOR PROSPERITY

Tonight, 1 in 5 children will go to bed exhausted having battled a day full of unknowns wondering, "Where will my next meal come from? Will I be safe in my home tonight? Will I even have a place to call home?" Worse yet, these same children will wake up tomorrow and face those unknowns all over again.

For decades, the federal government has sunk trillions of taxpayer dollars into the epidemic that is poverty, yet, year over year, we see that these well intended attempts fail to address the root causes blocking ones path to prosperity.

With that in mind, the Florida Chamber Foundation set out to create a pathway to prosperity for all children in Florida, ensuring that one's zip code, race, gender, ethnicity, or otherwise, would not determine their opportunities to prosper.

After extensively researching the path to prosperity, we identified the ten root causes that would impact one's ability to break the cycle of poverty. By attacking each root cause at its source and its location (zip code), the Prosperity Project will do what no one has before, create a model to eliminate generational poverty.

**With an aggressive goal of cutting childhood poverty in half by 2030, we need the leadership, expertise, and resources of the business community to effect real change in every corner of the state.**



To find out how you can help end childhood poverty in your county, contact Kyle Baltuch at [kbaltuch@flfoundation.org](mailto:kbaltuch@flfoundation.org).